

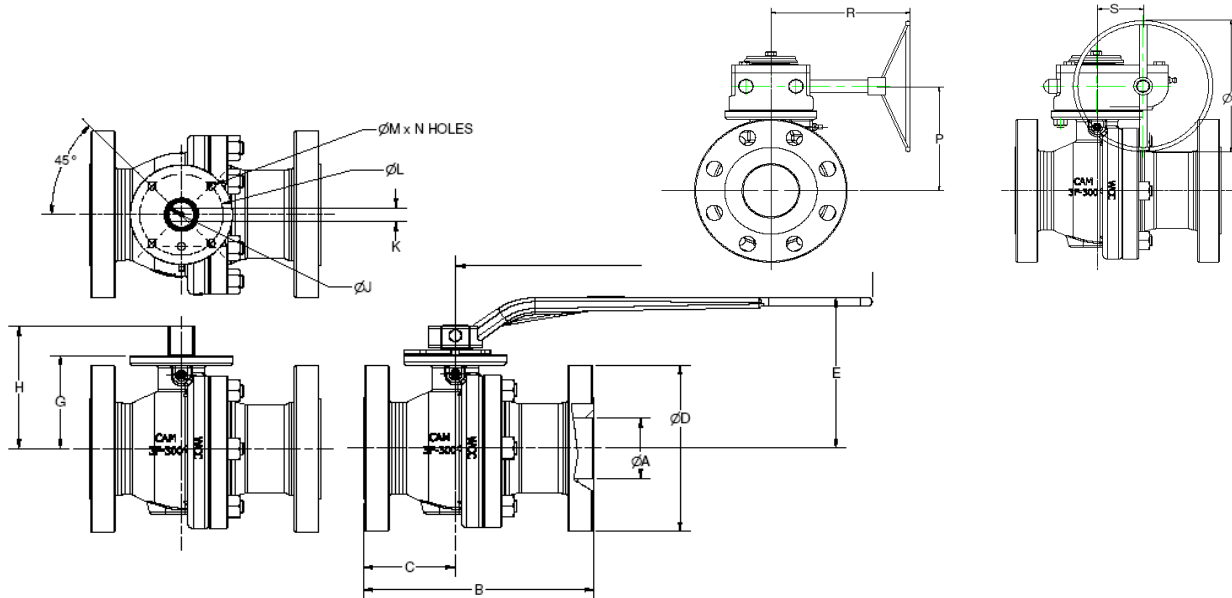


SERIES FB FLOATING BALL VALVE

Class 150 - 1500 ANSI B16.34

CLASS 150 - 285 WP @ 100 F, Shell test 428 psi
 CLASS 300 - 740 WP @ 100 F, Shell test 1110 psi
 CLASS 600 - 1480 WP @ 100 F, Shell test 2220 psi
 CLASS 900 - 2220 WP @ 100 F, Shell test 3330 psi
 CLASS 1500 - 3705 WP @ 100 F, Shell test 5560 psi

DS-479
 1 of 4
 3/17/2010
 Rev 03



DIM	SIZE	1" x 1"					1-1/2" x 1-1/2"					2" x 1-1/2"				
		CLASS	150	300	600	900	1500	150	300	600	900	1500	150	300	600	900
Wt (lbs)	w/ lever	11	15	25	30	30	21	28	37	52	52	25	32	43	77	77
	w/ gear	16	20	30	35	35	29	37	45	60	60	33	40	51	85	85
A - Ball Port		1.00	1.00	1.00	1.00	1.00	1.50	1.50	1.50	1.50	1.50	1.50	1.50	1.50	1.50	1.50
B - end to end	RF	5.00	6.50	8.50	10.00	10.00	6.50	7.50	9.50	12.00	12.00	7.00	8.50	11.50	14.50	14.50
	RTJ			8.50	10.00	10.00			9.50	12.00	12.00			11.62	14.62	14.62
C - body end to stem CL		2.09	2.85	3.85	4.41	4.41	2.81	3.31	4.69	6.00	6.00	3.25	4.13	4.26	7.26	7.26
D - flange diameter		4.25	4.87	4.87	5.87	5.87	5.00	6.12	6.12	7.00	7.00	6.00	6.50	6.50	8.50	8.50
E - valve CL to top lever		5.00	5.00	5.00	5.00	5.00	5.75	5.75	5.75	5.75	5.75	5.75	5.75	5.75	5.75	5.75
F - stem CL to lever end		10.00	10.00	10.00	10.00	10.00	12.00	12.00	12.00	12.00	12.00	12.00	12.00	12.00	12.00	12.00
G - valve CL to top flange		2.25	2.25	2.25	2.25	2.25	3.19	3.19	3.19	3.19	3.19	3.19	3.19	3.19	3.19	3.19
H - valve CL to stem end		2.98	2.98	2.98	2.98	2.98	4.14	4.14	4.14	4.07	4.07	4.14	4.14	4.14	4.07	4.07
J - stem diameter		0.810	0.810	0.810	0.810	0.810	0.994	0.994	0.994	1.120	1.120	0.994	0.994	0.994	1.120	1.120
K - stem flat		0.352	0.352	0.352	0.352	0.352	0.504	0.504	0.504	0.564	0.564	0.504	0.504	0.504	0.564	0.564
L - top work BC		1.969	1.969	1.969	1.969	1.969	2.750	2.750	2.750	2.750	2.750	2.750	2.750	2.750	2.750	2.750
M - hole diameter		0.28	0.28	0.28	0.28	0.28	0.34	0.34	0.34	0.35	0.35	0.34	0.34	0.34	0.35	0.35
N - number of holes		4	4	4	4	4	4	4	4	4	4	4	4	4	4	4
R - gear CL to hwd end		4.69	4.69	4.69	4.69	4.69	7.05	7.05	7.05	7.05	7.05	7.05	7.05	7.05	7.05	7.05
P - valve CL to gear CL		3.38	3.38	3.38	3.38	3.38	4.32	4.32	4.32	4.32	4.32	4.32	4.32	4.32	4.32	4.32
S - CL stem to CL hwd		1.67	1.67	1.67	1.67	1.67	2.05	2.05	2.05	2.05	2.05	2.05	2.05	2.05	2.05	2.05
T - hwd diameter		5.00	5.00	5.00	5.00	5.00	6.30	6.30	6.30	6.30	6.30	6.30	6.30	6.30	6.30	6.30

DESIGN DATA

BTO MAX Torque (IN-LB)	0 psi	SIZE/ CLASS	TEFLON SEAT			NYLON SEAT			CV VALUES		
			1x1	1.5x1.5	2x1.5	1x1	1.5x1.5	2x1.5	1x1	1.5x1.5	2x1.5
				120	240	240	130	420	420		
	285 psi	150	130	360	360	160	480	480	98	260	185
	740 psi	300	160	480	480	190	540	540	98	209	182
	1480 psi	600				250	660	660	93	225	171
	2220 psi	900				330	980	980	90	205	135
	3705 psi	1500				520	1350	1350	90	205	135

Max. Stem torque capacity (IN-LB)	316 SS stem	1x1			1.5x1.5			2x1.5		
		150	300	600	900	1500	2020	4520	4520	
	Low Alloy or 17-4 SS stem	150	970	2170	2170	150	2020	4520	4520	
		300	970	2170	2170	300	2020	4520	4520	
		600	970	2170	2170	600	2020	4520	4520	
		900	970	3180	3180	900	2020	6630	6630	
		1500	970	3180	3180	1500	2020	6630	6630	

USE A SAFETY FACTOR OF 2.00 MIN FOR ACTUATION. CONSULT FACTORY FOR LT SERVICE AND INTERMEDIATE PRESSURES

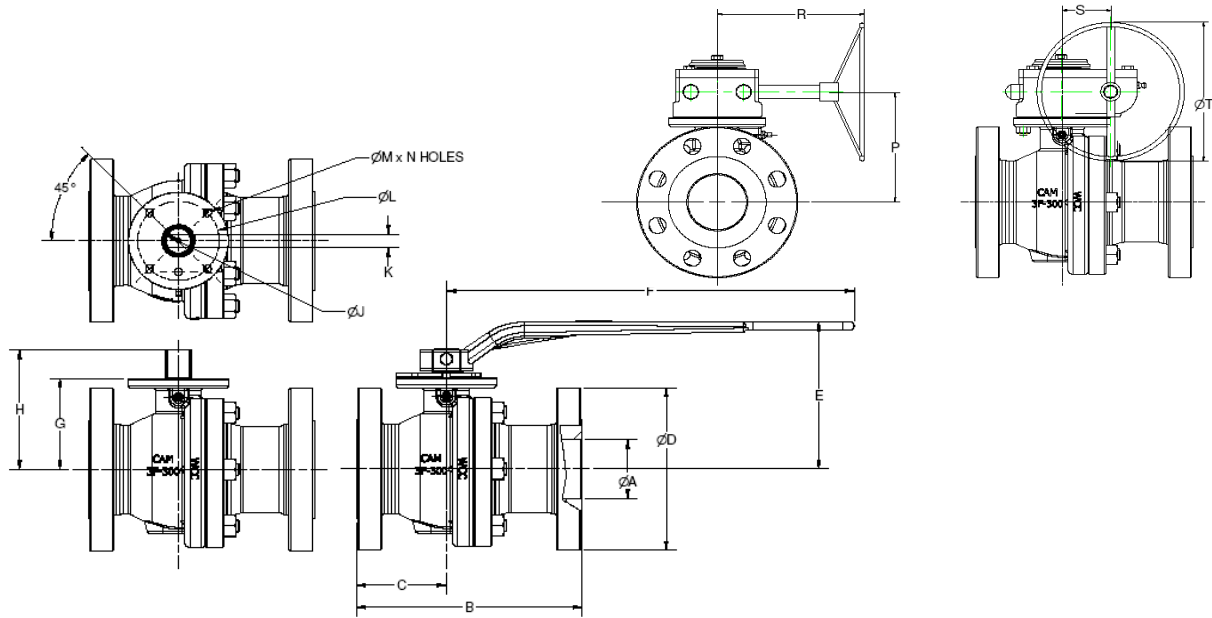


SERIES FB FLOATING BALL VALVE

Class 150 - 1500 ANSI B16.34

CLASS 150 - 285 WP @ 100 F, Shell test 428 psi
 CLASS 300 - 740 WP @ 100 F, Shell test 1110 psi
 CLASS 600 - 1480 WP @ 100 F, Shell test 2220 psi
 CLASS 900 - 2220 WP @ 100 F, Shell test 3330 psi
 CLASS 1500 - 3705 WP @ 100 F, Shell test 5560 psi

DS-479
 2 of 4
 3/17/2010
 Rev 03



DIM	SIZE	2" x 2"					3" x 2"				3" x 3"		
		CLASS	150	300	600	900	1500	150	300	600	900	150	300
Wt (lbs)	w/ lever	29	36	47	95	95	40	60	69	110	63	83	120
	w/ gear	37	44	55	116	116	48	68	77	131	84	104	141
A - Ball Port		2.00	2.00	2.00	2.00	2.00	2.00	2.00	2.00	2.00	3.00	3.00	3.00
B - end to end	RF	7.00	8.50	11.50	14.50	14.50	8.00	11.12	14.00	15.00	8.00	11.12	14.00
	RTJ			11.62	14.62	14.62			14.12	15.12			14.12
C - body end to stem CL		3.25	4.13	4.26	7.06	7.06	3.69	4.50	5.00	7.31	3.69	4.44	5.00
D - flange diameter		6.00	6.50	6.50	8.50	8.50	7.50	8.25	8.25	9.50	7.50	8.25	8.25
E - valve CL to top lever		6.09	6.09	6.09	6.70	6.70	6.09	6.09	6.09	6.70	7.44	7.44	7.44
F - stem CL to lever end		12.00	12.00	12.00	20.00	20.00	12.00	12.00	12.00	20.00	20.00	20.00	20.00
G - valve CL to top flange		3.56	3.56	3.56	3.88	3.88	3.56	3.56	3.56	3.88	4.63	4.63	4.63
H - valve CL to stem end		4.48	4.48	4.48	5.19	5.19	4.48	4.48	4.48	5.19	6.09	6.09	6.09
J - stem diameter		1.120	1.120	1.120	1.310	1.310	1.120	1.120	1.120	1.310	1.310	1.310	1.310
K - stem flat		0.564	0.564	0.564	0.682	0.682	0.564	0.564	0.564	0.682	0.682	0.682	0.682
L - top work BC		2.750	2.750	2.750	4.016	4.016	2.750	2.750	2.750	4.016	4.016	4.016	4.016
M - hole diameter		0.34	0.34	0.34	0.40	0.40	0.34	0.34	0.34	0.40	0.40	0.40	0.40
N - number of holes		4	4	4	4	4	4	4	4	4	4	4	4
R - gear CL to hwd end		7.05	7.05	7.05	9.18	9.18	7.05	7.05	7.05	9.18	9.18	9.18	9.18
P - valve CL to gear CL		4.69	4.69	4.69	5.47	5.47	4.69	4.69	4.69	5.47	6.22	6.22	6.22
S - CL stem to CL hwd		2.05	2.05	2.05	2.80	2.80	2.05	2.05	2.05	2.80	2.80	2.80	2.80
T - hwd diameter		6.30	6.30	6.30	7.87	7.87	6.30	6.30	6.30	7.87	7.87	7.87	7.87

DESIGN DATA

BTO MAX Torque (IN-LB)	0 psi	SIZE/ CLASS	TEFLON SEAT			NYLON SEAT			CV VALUES		
			2x2	3x2	3x3	2x2	3x2	3x3	2x2	3x2	3x3
			360	360	600	480	480	720			
285 psi	150		600	600	1080	720	720	1200	442	221	1,363
740 psi	300		720	720	1680	960	960	1800	454	381	1,197
1480 psi	600					1200	1200	2160	302	289	1,072
2220 psi	900					1720	1720		290	175	
3705 psi	1500					2600			290		

Max. Stem torque capacity (IN-LB)	316 SS stem	2x2			3x2			3x3		
		150	3180	3180	5320	3180	3180	5320	3180	3180
Low Alloy or 17-4 SS stem	150	6630	6630	11080						
	300	6630	6630	11080						
	600	6630	6630	11080						
	900	11080	11080							
	1500	11080								

USE A SAFETY FACTOR OF 2.00 MIN FOR ACTUATION. CONSULT FACTORY FOR LT SERVICE AND INTERMEDIATE PRESSURES

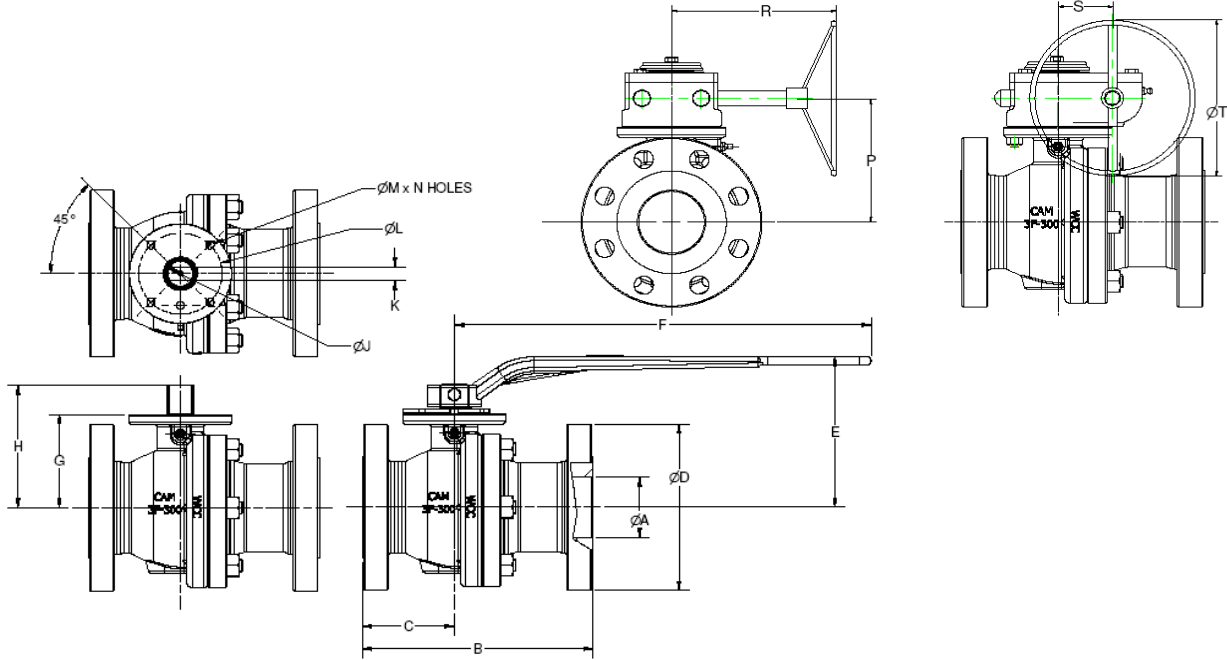


SERIES FB FLOATING BALL VALVE

Class 150 - 1500 ANSI B16.34

CLASS 150 - 285 WP @ 100 F, Shell test 428 psi
 CLASS 300 - 740 WP @ 100 F, Shell test 1110 psi
 CLASS 600 - 1480 WP @ 100 F, Shell test 2220 psi
 CLASS 900 - 2220 WP @ 100 F, Shell test 3330 psi
 CLASS 1500 - 3705 WP @ 100 F, Shell test 5560 psi

DS-479
 3 of 4
 3/17/2010
 Rev 03



DIM	SIZE	4" x 3"			4" x 4"			6" x 4"		
		CLASS	150	300	600	150	300	600	150	300
Wt (lbs)	w/ lever	73	104	139	96	135	180	116	190	288
	w/ gear	94	125	160	117	156	201	137	212	310
A - Ball Port		3.00	3.00	3.00	4.00	4.00	4.00	4.00	4.00	4.00
B - end to end	RF	9.00	12.00	17.00	9.00	12.00	17.00	10.50	15.88	22.00
	RTJ			17.12			17.12			22.12
C - body end to stem CL		4.25	4.87	6.00	4.25	4.75	6.00	5.00	6.82	8.50
D - flange diameter		9.00	10.00	10.75	9.00	10.00	10.75	11.00	12.50	14.00
E - valve CL to top lever		7.44	7.44	7.44	10.19	10.19	10.19	10.19	10.19	10.19
F - stem CL to lever end		20.00	20.00	20.00	24.00	24.00	24.00	24.00	24.00	24.00
G - valve CL to top flange		4.63	4.63	4.63	5.88	5.88	5.88	5.88	5.88	5.88
H - valve CL to stem end		6.09	6.09	6.09	7.68	7.68	7.68	7.68	7.68	7.68
J - stem diameter		1.310	1.310	1.310	1.498	1.498	1.498	1.498	1.498	1.498
K - stem flat		0.682	0.682	0.682	0.842	0.842	0.842	0.842	0.842	0.842
L - top work BC		4.016	4.016	4.016	4.016	4.016	4.016	4.016	4.016	4.016
M - hole diameter		0.40	0.40	0.40	0.41	0.41	0.41	0.41	0.41	0.41
N - number of holes		4	4	4	4	4	4	4	4	4
R - gear CL to hwd end		9.18	9.18	9.18	9.18	9.18	10.56	9.18	9.18	10.56
P - valve CL to gear CL		6.22	6.22	6.22	7.47	7.47	7.47	7.47	7.47	7.47
S - CL stem to CL hwd		2.80	2.80	2.80	2.80	2.80	2.80	2.80	2.80	2.80
T - hwd diameter		7.87	7.87	7.87	7.87	7.87	11.80	7.87	7.87	11.80

DESIGN DATA

	SIZE/ CLASS	TEFLON SEAT			NYLON SEAT			CV VALUES			
		4x3	4x4	6x4	4x3	4x4	6x4	4x3	4x4	6x4	
BTO MAX Torque (IN-LB)	0 psi		600	840	840	720	960	960			
	285 psi	150	1080	1560	1560	1200	1680	1680	509	2,452	1,020
	740 psi	300	1680	2160	2160	1800	2280	2280	606	2,323	1,029
	1480 psi	600				2160	2880	2880	464	1,729	1,068

Max. Stem torque capacity (IN-LB)	316 SS stem	4x3			4x4			6x4		
		150	300	600	5320	8920	8920	5320	8920	8920
Low Alloy or 17-4 SS stem	150	11080	18590	18590						
	300	11080	18590	18590						
	600	11080	18590	18590						

USE A SAFETY FACTOR OF 2.00 MIN FOR ACTUATION. CONSULT FACTORY FOR LT SERVICE AND INTERMEDIATE PRESSURES

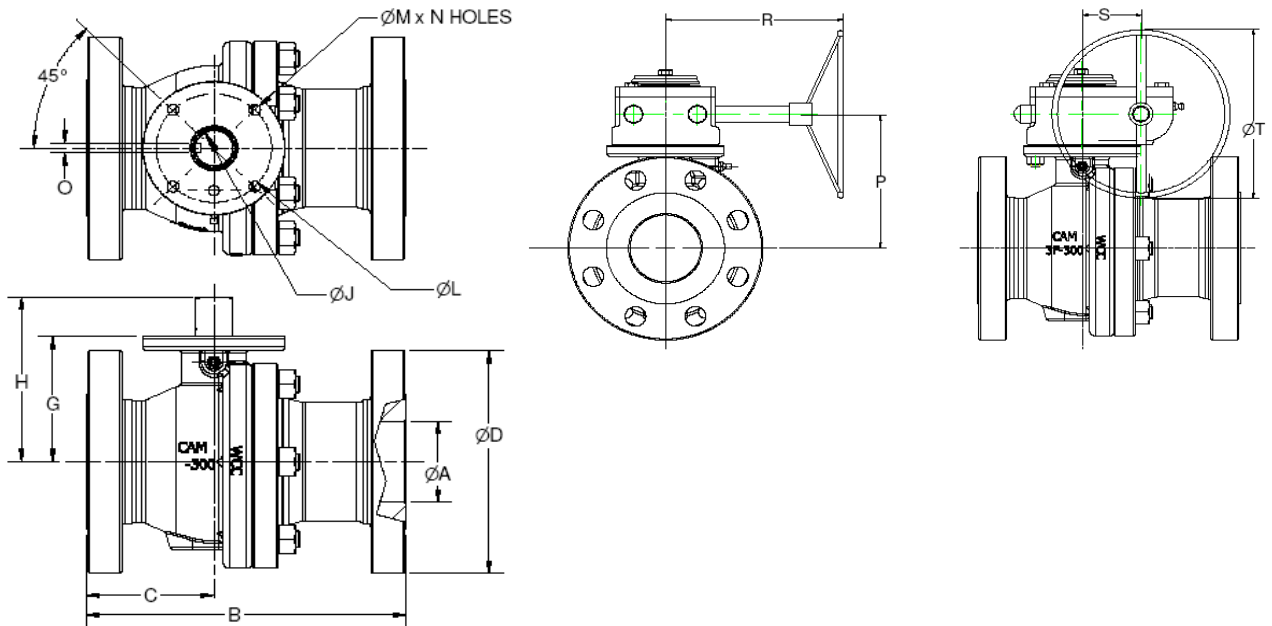


SERIES FB FLOATING BALL VALVE

Class 150 - 1500 ANSI B16.34

CLASS 150 - 285 WP @ 100 F, Shell test 428 psi
 CLASS 300 - 740 WP @ 100 F, Shell test 1110 psi
 CLASS 600 - 1480 WP @ 100 F, Shell test 2220 psi
 CLASS 900 - 2220 WP @ 100 F, Shell test 3330 psi
 CLASS 1500 - 3705 WP @ 100 F, Shell test 5560 psi

DS-479
 4 of 4
 3/17/2010
 Rev 03



DIM	SIZE	6" x 6"		8" x 6"		8" x 8"		10" x 8"	
		CLASS 150	CLASS 300	CLASS 150	CLASS 300	CLASS 150	CLASS 300	CLASS 150	CLASS 300
Wt (lbs)	w/ lever	205	255	230	325	340	450	455	575
	w/ gear	255	305	280	375	410	520	525	645
A - Ball Port		6.00	6.00	6.00	6.00	8.00	8.00	8.00	8.00
B - end to end	RF	15.50	15.88	11.50	16.50	18.00	19.75	21.00	22.38
	RTJ								
C - body end to stem CL		7.75	8.00	5.50	8.25	9.12	10.00	9.62	11.12
D - flange diameter		11.00	12.50	13.50	15.00	13.50	15.00	16.00	17.50
G - valve CL to top flange		8.50	8.50	8.50	8.50	10.12	10.12	10.12	10.12
H - valve CL to stem end		10.92	10.92	10.92	10.92	13.31	13.31	13.31	13.31
J - stem diameter		2.125	2.125	2.125	2.125	2.375	2.375	2.375	2.375
O - stem key		0.500	0.500	0.500	0.500	0.625	0.625	0.625	0.625
L - top work BC		5.512	5.512	5.512	5.512	6.496	6.496	6.496	6.496
M - hole diameter		0.67	0.67	0.67	0.67	0.78	0.78	0.78	0.78
N - number of holes		4	4	4	4	4	4	4	4
R - gear CL to hwd end		11.71	12.30	11.71	12.30	17.50	17.50	17.50	17.50
P - valve CL to gear CL		10.39	10.39	10.39	10.39	12.29	12.29	12.29	12.29
S - CL stem to CL hwd		4.11	4.11	4.11	4.11	5.12	5.12	5.12	5.12
T - hwd diameter		11.80	12.85	11.80	12.85	14.44	14.44	14.44	14.44

DESIGN DATA

	SIZE/ CLASS	TEFLON SEAT				NYLON SEAT				CV VALUES					
		6x6	8x6	8x8	10x8	6x6	8x6	8x8	10x8	6x6	8x6	8x8	10x8		
BTO MAX Torque (IN-LB)	0 psi					4800	4800	8400	8400						
	285 psi	150				8220	8200	12600	12600	4,700	2,216	10,206	3,890		
	740 psi	300				11800	11800	18500	18500	5,438	2,343	8,333	4172		
Max. Stem torque capacity (IN-LB)	316 SS stem		6x6	8x6	8x8	10x8	low alloy or 17-4 SS stem					6x6	8x6	8x8	10x8
		150	36030	36030	48790	48790		150	75070	75070	101600	101600			
		300	36030	36030	48790	48790		300	75070	75070	101600	101600			

USE A SAFETY FACTOR OF 2.00 MIN FOR ACTUATION. CONSULT FACTORY FOR LT SERVICE AND INTERMEDIATE PRESSURES